

NASA Goddard Space Flight Center

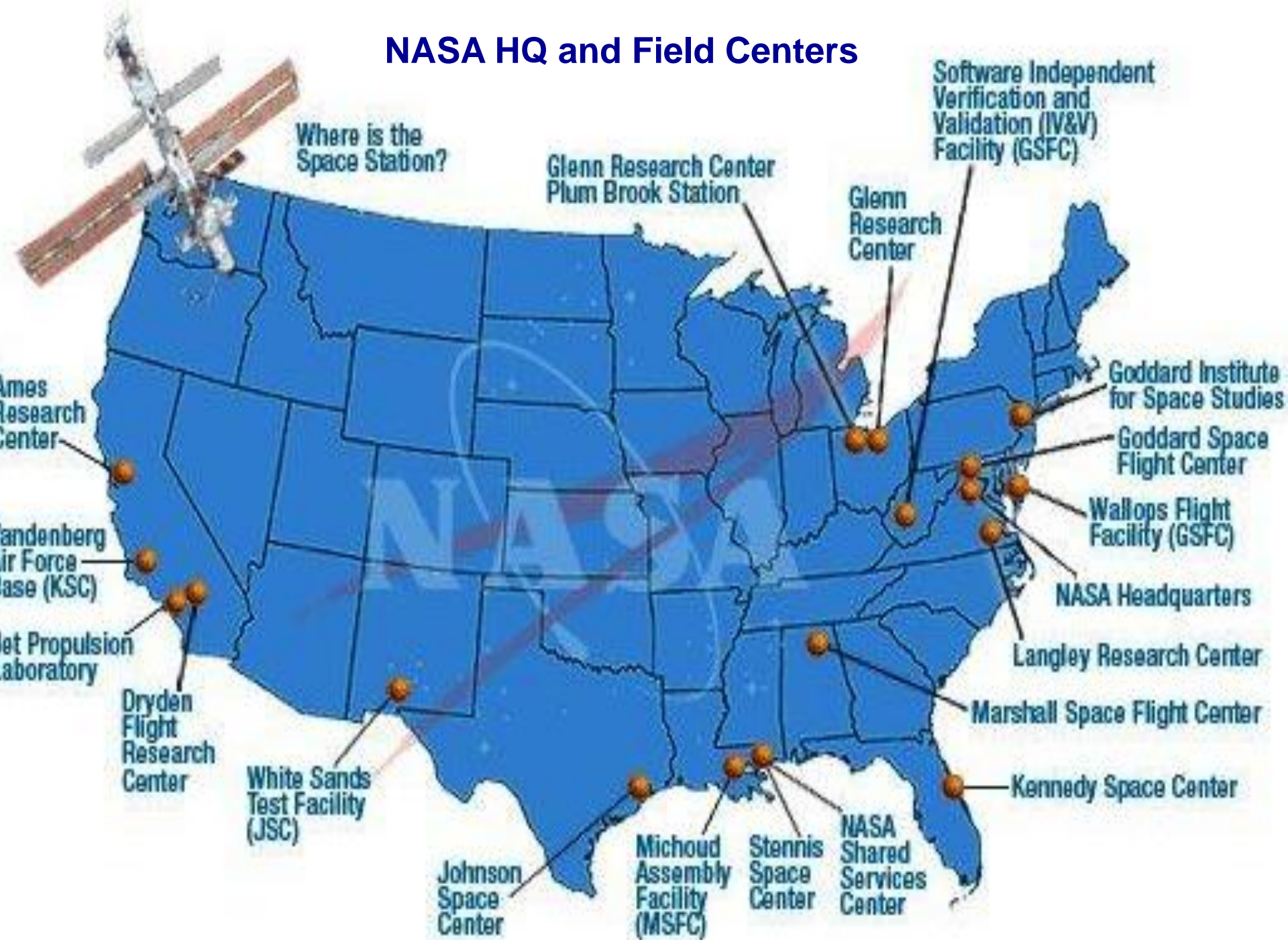
**“It is difficult to say what is impossible,
for the dream of yesterday is the hope
of today and the reality of tomorrow.”**

**Dr. Robert H. Goddard
1882 - 1945**



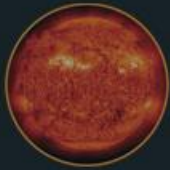
Ruth.C.Carter@nasa.gov

NASA HQ and Field Centers

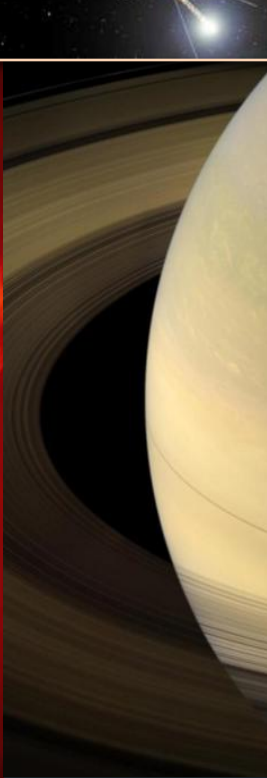
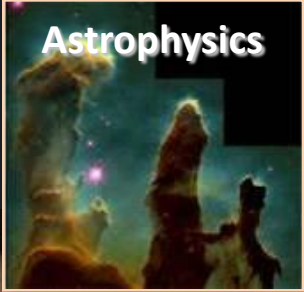
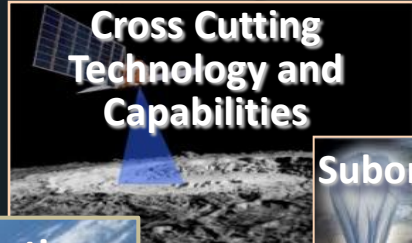
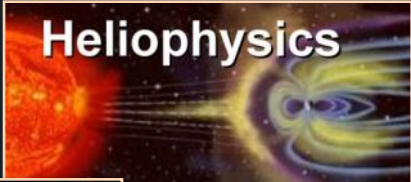


NASA Goddard Space Flight Center (GSFC)

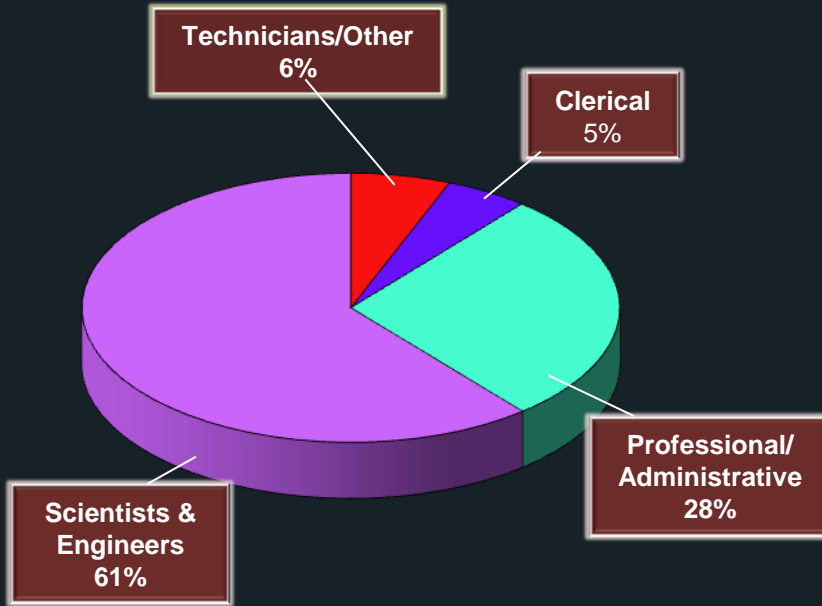
- GSFC is a major NASA space research laboratory and it is NASA's first Space Flight Center (established 1959)
 - Largest combined organization of scientists and engineers in the United States dedicated to increasing knowledge of the Earth, the Solar System, and the Universe via observations from Space
- Nearly 300 successful missions including the World's First Weather Satellite and the Hubble Space Telescope
- 2006 Nobel Prize in Physics [Big Bang/Cosmic Background]
- Hubble Supported 2011 Nobel Prize in Physics
- WMAP Team Awarded 2012 Gruber Prize for Cosmology



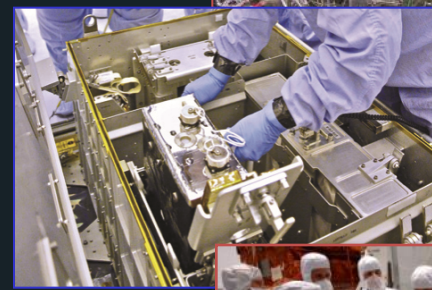
Our Lines of Business



Our People



GSFC Workforce
Total Civil Servants: 3,400
Total Contractors : 6,400
Total Workforce: 9,800



What are NASA Internships for Students?

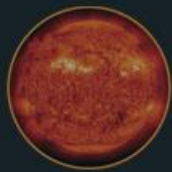
- NASA internships are educational hands-on training that provides unique NASA-related research and operational experience for students
 - NASA internships are available to students in a wide-variety of majors ranging from business to science and engineering
 - Individual internship opportunity will target specific discipline
- NASA internships can be full or part-time, conducted at a NASA facility
- NASA GSFC Student Intern Program
 - Pathways Intern Program at NASA/GSFC
 - Full-time position is offered at the end of the internship
 - All other Intern Programs are managed by the GSFC Office of Education
 - All intern applications are processed through OSSI

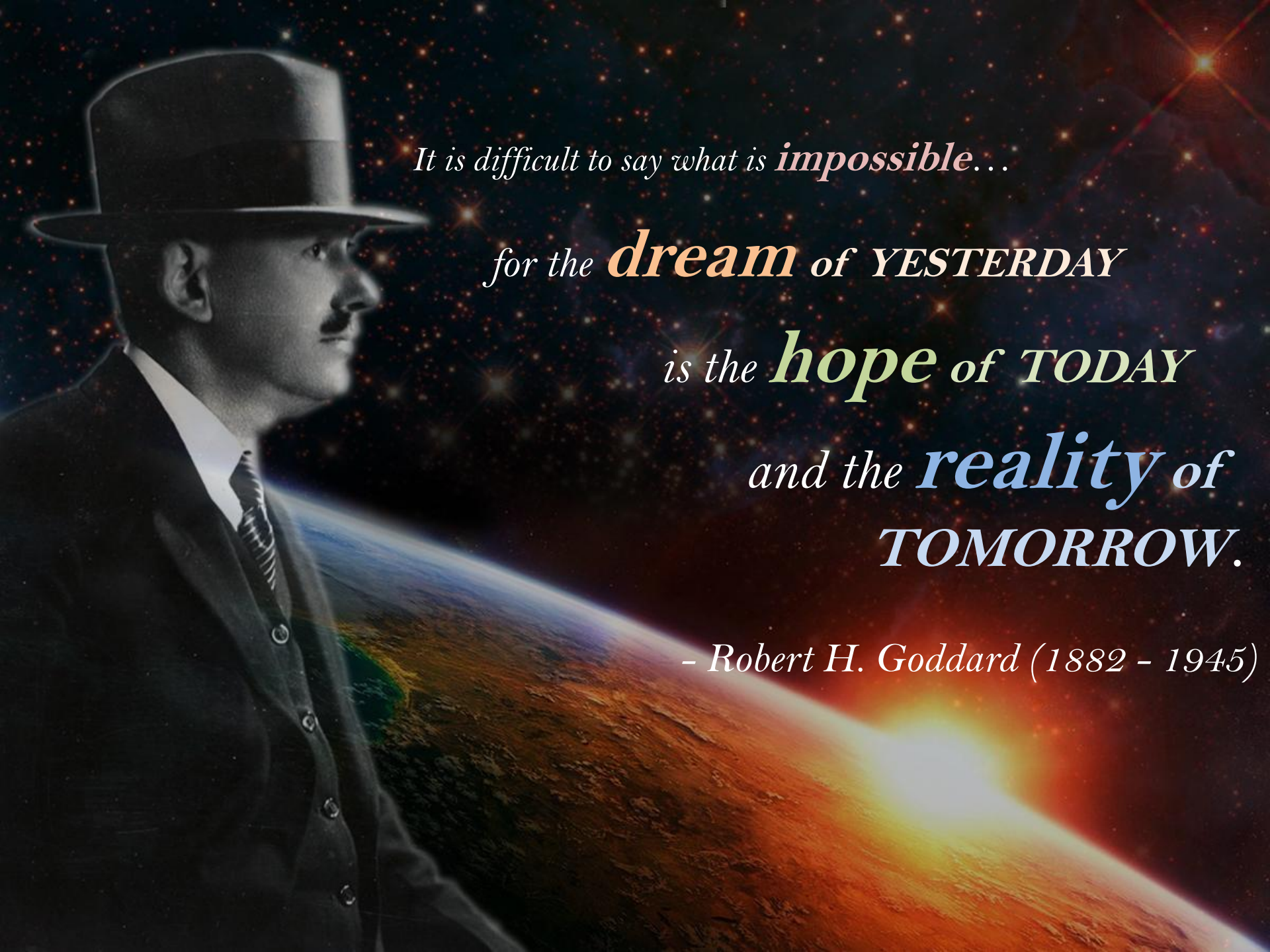


What is One Stop Shopping Initiative (OSSI)?

<https://intern.nasa.gov>

- OSSI is a NASA-wide system for the recruitment, application, selection and career development of undergraduate and graduate students primarily in science, technology, engineering and mathematics disciplines
 - Opportunities for students in other disciplines are also available
- Internship Eligibility
 - NASA internships are available to high school through graduate level students attending full-time accredited programs appropriate to the NASA internship opportunity for which they receive an offer
 - US citizenship is required
 - Applicants must be enrolled full-time in a degree-granting course of study appropriate to NASA's long-term professional workforce needs
 - College-level interns must maintain a minimum GPA of 3.0 on a 4.0 scale or equivalent
- How to start?
 - Register in OSSI (<https://intern.nasa.gov>)
 - Create an interest profile to specify your areas of interest
 - Search and select opportunities of interest, identifying your top 15 prior to the end of the application period





*It is difficult to say what is **impossible**...*

*for the **dream** of YESTERDAY*

*is the **hope** of TODAY*

*and the **reality** of
TOMORROW.*

- Robert H. Goddard (1882 - 1945)