

## Directions to Santa Monica Double Tree Hotel

### From Airport Directions

From Santa Monica Airport -Take Ocean Park Blvd West to Lincoln Blvd. Turn right on Lincoln Blvd. Make a left on Pico and right on 4th street. The hotel is on the right.

From LAX -Take Century Blvd to I-405 North to I-10 West. Exit at 4th Street and turn left. The hotel is at the corner of I-10 and 4th Street.

### General Arrival Directions

I-10 West exit 4th St.

Turn left on 4th, Hotel is on the left hand side.



The KWiSE 7th Annual Meeting is sponsored by Korean-American Scientists and Engineers Association (KSEA) and Korean Federation of Science and Technology Societies (KOFST).



RSVP for Registration

In Greater LA area:

MinHee K. Ko, Ph.D. [mko@doheny.org](mailto:mko@doheny.org)

In Greater San Diego area:

Gwe-Ya Kim, Ph.D.

[gweyakim@gmail.com](mailto:gweyakim@gmail.com)

From outside southern California

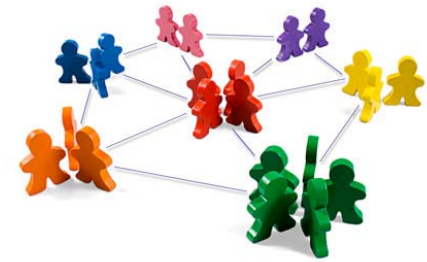
[info.kwise@gmail.com](mailto:info.kwise@gmail.com)

General Information about KWiSE:

[www.kwise.org](http://www.kwise.org)

*made by Eunha Hoh*

# KWiSE 7th Annual Meeting



***It's all about people. It's about networking and being nice to people and not burning any bridges.***

***Mike Davidson***

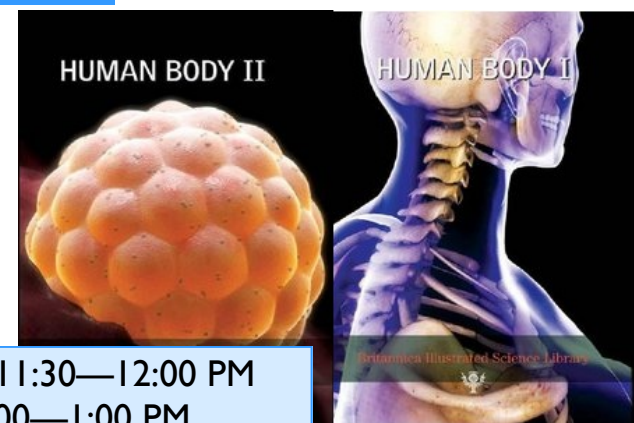
**Santa Monica Double Tree Hotel  
1707 Fourth Street,  
Santa Monica, CA 90401-3310**

**October 15, 2011  
Registration: 8:30 AM**

# KWiSE 7th Annual Meeting Program

## President Remark:

Please come and celebrate the 7th KWiSE annual meeting. This meeting is dedicated to graduate and undergraduate students in the southern California area. KWiSE leaders will welcome you. There is no registration fee and free breakfast and lunch at Double Tree Hotel in Santa Monica (see the direction in the program). You will meet outstanding scientists and engineers representing people like you with Korean heritage. Seats are limited, please RSVP earlier. See you all.   
 -Sanghee Yoo



Group Photo 11:30—12:00 PM  
Lunch 12:00—1:00 PM

<b>Opening Remarks</b> Sanghee Yoo, Ph.D. Vertex Pharmaceuticals KWiSE President		9:00-9:15 am
<b>Which Career Path is Right for You?</b> Hosin Lee, Ph.D. University of Iowa Civil Engineering		9:20-10:00 am
<b>Break</b>		10:00-10:30 am
<b>Past, Present, and Future of KWiSE</b> Gye Won Han, Ph.D. The Scripps Research Institute		10:30-11:00 am
<b>TBD</b> Eun-Suk Seo, Ph.D. University of Maryland Applied Physics		11:00-11:30 am

Engineering		
<b>Pedagogical Technologies and Opportunities</b> Jihee Kim, Ph.D. University of Southern California		1:00-1:30 pm
<b>Contributing to a Sustainable Future: A Civil Engineering Perspective</b> Christy Jeon, Ph.D. PARSONS		1:30-2:00 pm
<b>Break</b>		2:00-2:30 pm
<b>10 Tips to Help You in Choosing and Starting Your Career</b> Hyo-Joo Han, Ph.D. Georgia Southern University		2:30-3:00 pm
<b>Networking</b>		3:00-3:30 pm

Science		
<b>How Can Organic Synthesis Impact Human Health?</b> Ohyun Kwon, Ph.D. University of California Los Angeles		1:00-1:30 pm
<b>Biopharmaceutical Company As a Career Choice</b> Sanghee Yoo, Ph.D. Vertex Pharmaceuticals KWiSE President		1:30-2:00 pm
<b>Break</b>		2:00-2:30 pm
<b>Introduction to Medical Physics</b> Gwe-Ya Kim, Ph.D. University of California San Diego		2:30-3:00 pm
<b>Networking</b>		3:00-3:30 pm