

Korean-American Women in Science and Engineering

KWiSE NEWSLETTER

IN THIS ISSUE

Message from the President

Message from the President	1
KWiSE 7 th Administration	2
Missions of KWiSE	3
Conference Report	3
<i>2020 KWiSE NY/NJ Annual Conference</i>	3
<i>The 14th KWiSE West Coast Annual Conference</i>	5
Chapter News	7
How to Support KWiSE	8
Why KWiSE?	8
Announcements	9
<i>2020 KWSE-KWiSE Virtual Seminar</i>	9
<i>2020 KWiSE Virtual Conference</i>	10
<i>2020 KWiSE-ASA/CWS Florence Nightingale Day</i>	11
<i>2020 UKC</i>	12
Sponsors and Partners	12



Dear KWiSE members,

What challenge has 2020 brought us so far! A global pandemic of COVID-19 as well as civil unrest due to racial injustice across the USA. I hope everyone is coping with these challenges and able to draw strength from them to reach new grounds. I believe, we, as women scientists, have the resilience and insight to overcome any challenges that are faced our way and emerge much stronger from those experiences! As I approach the end of my term as the 7th president of KWiSE, I would like to thank the KWiSE Steering Committee members for their collective effort and wisdom in moving forward our mission amidst the challenges of the new reality. Special thanks go to Dr. Suejung Huh (Ohhh!, Inc.), who served as the General Secretary, and Dr. Hee-Jung Song (Univ. Maryland College Park), who served as the Treasurer. In addition, I thank all the help I have received from the Chapter Presidents, as well as generous support of our members and sponsors! The new administration of KWiSE will start on October 1st under the leadership of Dr. Jayoung Kim (Cedars Sinai Medical Ctr, UCLA) as the 8th President, Dr. Dong-Yun Kim (NIH) as the General Secretary and Dr. Minhee Ko (Doheny Eye Institute) as the Treasurer. Each chapter will elect new presidents in the coming days. I am very excited to see KWiSE grow under the new leadership!

I would like to take this opportunity to summarize our accomplishments during this first half of 2020. Due to COVID-19, our Annual Conferences have been converted to virtual venues. NY/NJ chapter was able to hold its Annual Conference on March 28, 2020 as planned albeit using a virtual platform with the theme of “Scientific Advances for Humanity.” On August 8, 2020 San Diego Chapter organized the 14th West Coast Annual Conference virtually with a theme of “When Science Becomes a Part of Your Life.” I would like to thank Dr. HeaYeon Lee (Mara Nanotech NY, Inc.; NY/NJ Chapter president) and Dr. Mee Young Hong (San Diego State Univ.; SD Chapter president) for successfully organizing these events. The conference reports can be found on our website (www.kwise.org) and in this Newsletter. While COVID-19 prevented us from gathering in person, virtual platform allowed members outside of the region to participate creating a new way in which KWiSE could operate. Based on the fact that virtual venues can have wider participation across the country and even from overseas, KWiSE is planning its very first nationwide Annual Conference, which will be held on October 10, 2020. The theme of the conference will be “Women Scientists in Society,” and we have a great list of speakers nominated from each chapter. The program is posted on our website, distributed through each chapter, and also available in this Newsletter. I hope many of you will register and join the event to show how we as a group can make a difference in society!

As a new initiative, the NIH Chapter of KWiSE has partnered with our counterpart in Korea, KWSE (Korean Women in Science and Engineering), to launch the 2020 KWSE-KWiSE Webinar series. This event invited speakers from both KWSE and KWiSE, and was designed to promote scientific exchange between the two groups. This event is still on-going through December, and the schedule and details on how to login is available on our website

[\(https://www.kwise.org/blog/2020/01/08/2020-kwse-kwise-virtual-seminar-webinar/\)](https://www.kwise.org/blog/2020/01/08/2020-kwse-kwise-virtual-seminar-webinar/). I thank the leadership of our NIH chapter president, Dr. Dong-Yun Kim, in spearheading this event! Based on the excitement generated from this virtual scientific exchange, KWiSE is planning to expand this into a nationwide event. I look forward to seeing new budding collaborations between our members and KWSE members.

In addition to scientific exchanges, one of our missions is to provide mentoring to our members. Thanks to the efforts initiated by the Texas Chapter president, Dr. Yangjin Bae (Baylor College of Medicine), several of our chapters were able to obtain funding through WISET to start new mentoring programs. KWiSE is planning to expand these programs to benefit our members. Especially, we are planning to build a database that can be used for effectively finding mentors or various job opportunities. To aid in this effort, we will be updating our KWiSE website to provide such information through our members-only access portal. Once this is accomplished, it will add to the benefits of becoming a KWiSE member.

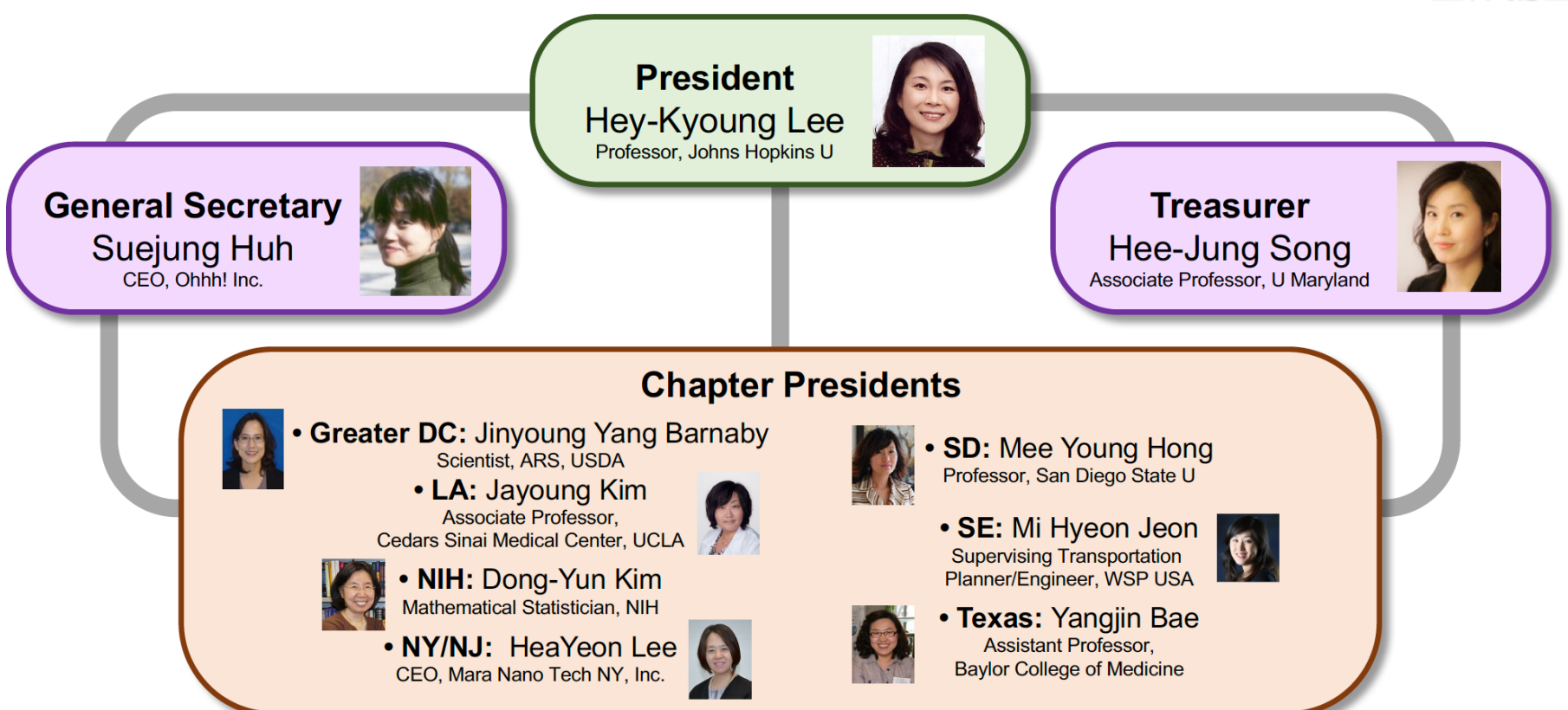
Another new development is on initiating a new outreach activity, called the Florence Nightingale Day, which is being organized in collaboration with ASA (American Statistical Association) and CWS (Caucus for Women in Statistics). This is an annual event that is run by ASA and CWS to introduce statistics and data science to middle and high school students. This year KWiSE will be partnering with these organizations to bring the event in a virtual format to our younger generation on October 24, 2020. Details can be found on our website and in this Newsletter.

As you can see we have a lot of exciting activities planned for the remainder of the year. While we miss all of our in-person interactions, I hope everyone will join our virtual events to hold each other strong and promote our excellence! It truly has been an honor and privilege to lead this organization for the last two years, and I look forward to participating in future activities as a member of KWiSE!

Sincerely Yours,
 Hey-Kyoung Lee
 7th KWiSE President

KWiSE 7th Administration Organization

KWiSE 7th Administration Organization



In addition to the KWiSE Steering Committee shown in the previous page, KWiSE headquarter (HQ) activities are advised by the KWiSE Advisory Committee, which is comprised of the past KWiSE presidents: Dr. Gye Won Han (1st), Dr. Sanghee Yoo (2nd), Dr. Haejung An (3rd), Dr. Eun-Suk Seo (4th), Dr. Jane Oh (5th), and Dr. Hee-Yong Kim (6th).

Dr. Eun Kyung Hwang (Oregon Health & Science Univ.) and Dr. Yuyoung Joo (Univ. Maryland School of Medicine) are serving as Publication Officers for the 7th Administration.

Missions of KWiSE

KWiSE serves Korean-American Women in Science & Engineering to promote networking for:

- Technical excellence
- Career development
- Professional collaboration
- Mentoring future generation
- US Korea cooperation

Conference Report

2020 KWiSE NY/NJ Annual Conference Report

KWiSE NY/NJ Chapter Joint Symposium 2020

Theme: Scientific Advances for Humanity

Time: 11:15am - 12:45pm, Saturday March 28, 2020

Organizers:

HeaYeon Lee, Ph.D., Founder/CEO of Mara-Nanotech New York, Inc.
 Sung Eun Choi, Ph.D., Associate Professor, Queens College
 Yeon Bai, Ph.D., Professor, Montclair State University
 Jeongran Lee, Ph.D., Member of Technical Staff, Nokia Bell Labs

Due to COVID-19, this event was held via Zoom (a Webinar app), with Virtual Event Support thanks to:

Jinhee Kim, Ph.D., Rutgers Medical School

Meeting Schedule:

- 11:15am-11:20am: Greetings/Opening Remarks
 - Dr. HeaYeon Lee, Chapter President Founder/CEO of Mara-Nanotech New York, Inc.
 - 11:20am-11:25am: Member Introduction
- (20mins Talk + 5mins Q&A)
- 11:25am-11:50am: Dr. Trishnee Bhurosy (Postdoctoral Fellow, Rutgers Cancer Institute of New Jersey)
 - She can breastfeed: a systematic review on the feasibility and challenges of breastfeeding among breast cancer survivors
 - 11:50am-12:15pm: Dr. Teryn Cha (Assistant Professor, Computer Sciences, Essex County College)
 - Artificial Intelligence in Taxation
 - 12:15pm-12:40pm: Dr. Muri Han (Director, GC Pharma, Boston Office)
 - Development of upstream cell culture process for the production of biologics
 - 12:40pm-12:45pm: Closing Remarks

Summary:

The 2020 KWiSE New York/New Jersey Chapter Regional Conference was held on Saturday, the 28th of March, 2020 via Zoom assisted manner due to COVID-19. Under the theme of “Scientific Advances for Humanity”, this year’s conference featured three scholars from the fields of a Behavioral Science, Computer Science, and Chemical Engineering. The organizers were Drs. HeaYeon Lee (Founder/CEO of Mara-Nanotech New York, Inc.), Sung Eun Choi (Associate Professor, Queens College), Yeon Bai (Professor, Montclair State University), and Jeongran Lee (Research Statistician, Nokia Bell Labs). A total of 15+ members were

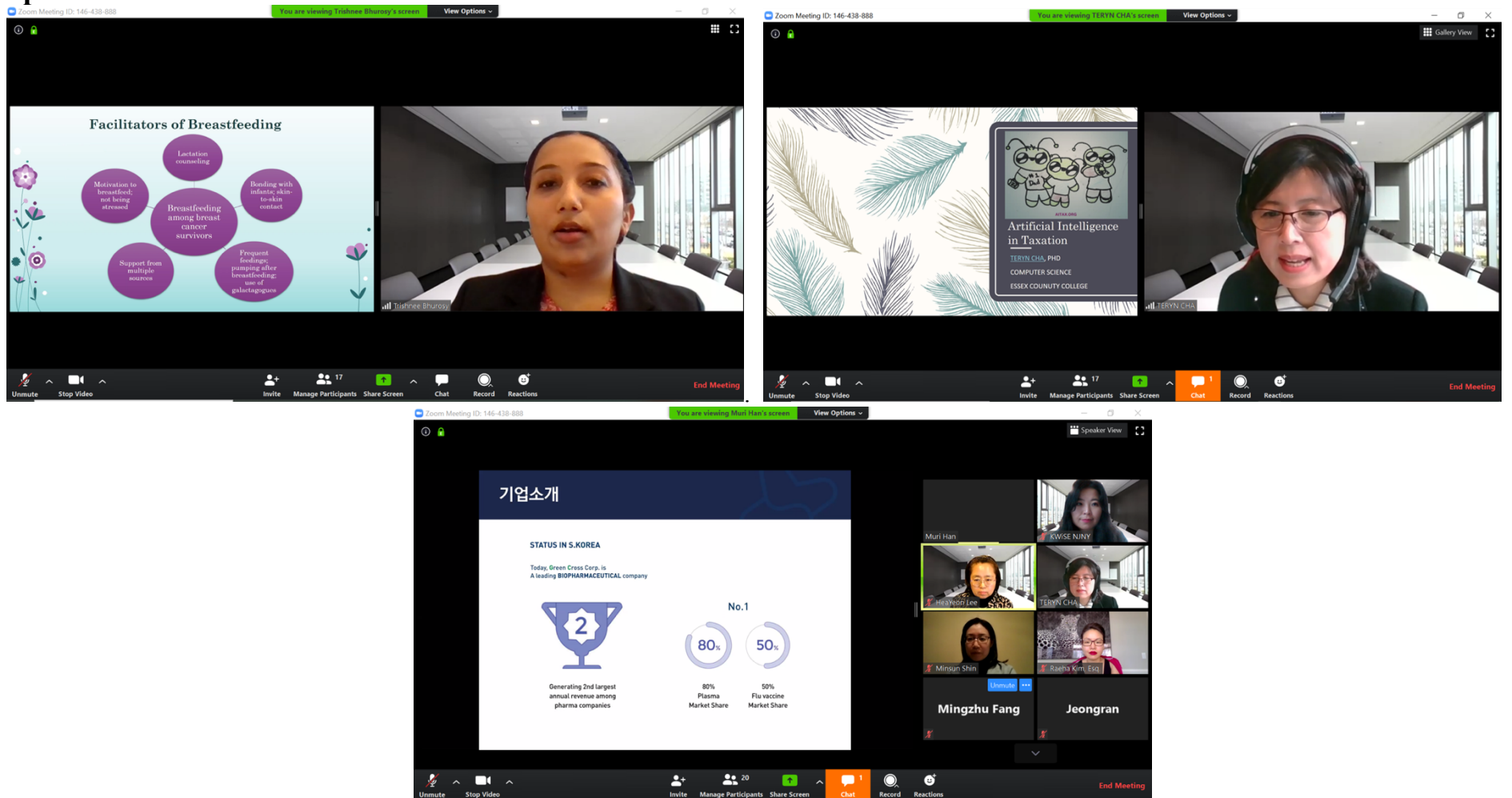
in attendance.

This year’s conference started with greetings of the new Chapter President Dr. HeaYeon Lee. In her greetings, she thanked KWiSE New York/New Jersey Chapter members joining this first unique virtual event for the pursuit of both personal and professional excellence and happiness. Next, a member introduction session was held in a virtual manner via Zoom. During this session, each member had a chance to introduce themselves to the group and share any updates about both their personal and professional lives in short.

Then, the three speakers took turns to present on topics of their specialties. The first speaker was Trishnee Bhurosy (Ph.D., Rutgers Cancer Institute of New Jersey) a behavioral scientist who specializes in applied research to design and evaluate theory-driven and technology-based nutrition intervention programs. Her talk was about “She can breastfeed: a systematic review on the feasibility and challenges of breastfeeding among breast cancer survivors”. The second speaker was Dr. Teryn Cha is an assistant (tenured) professor of Computer Sciences at Essex County College, Newark, New Jersey. Her talk was about “Artificial Intelligence in Taxation”, how AI-enabled software can take on a role in understanding individual taxpayers’ behaviors and recommending ways of saving taxes. The last speaker, Dr. Muri Han who is currently working as Director at GC Pharma (in Boston office), accessed from South Korea late at night for this event. She talked about “Development of upstream cell culture process for the production of biologics”.

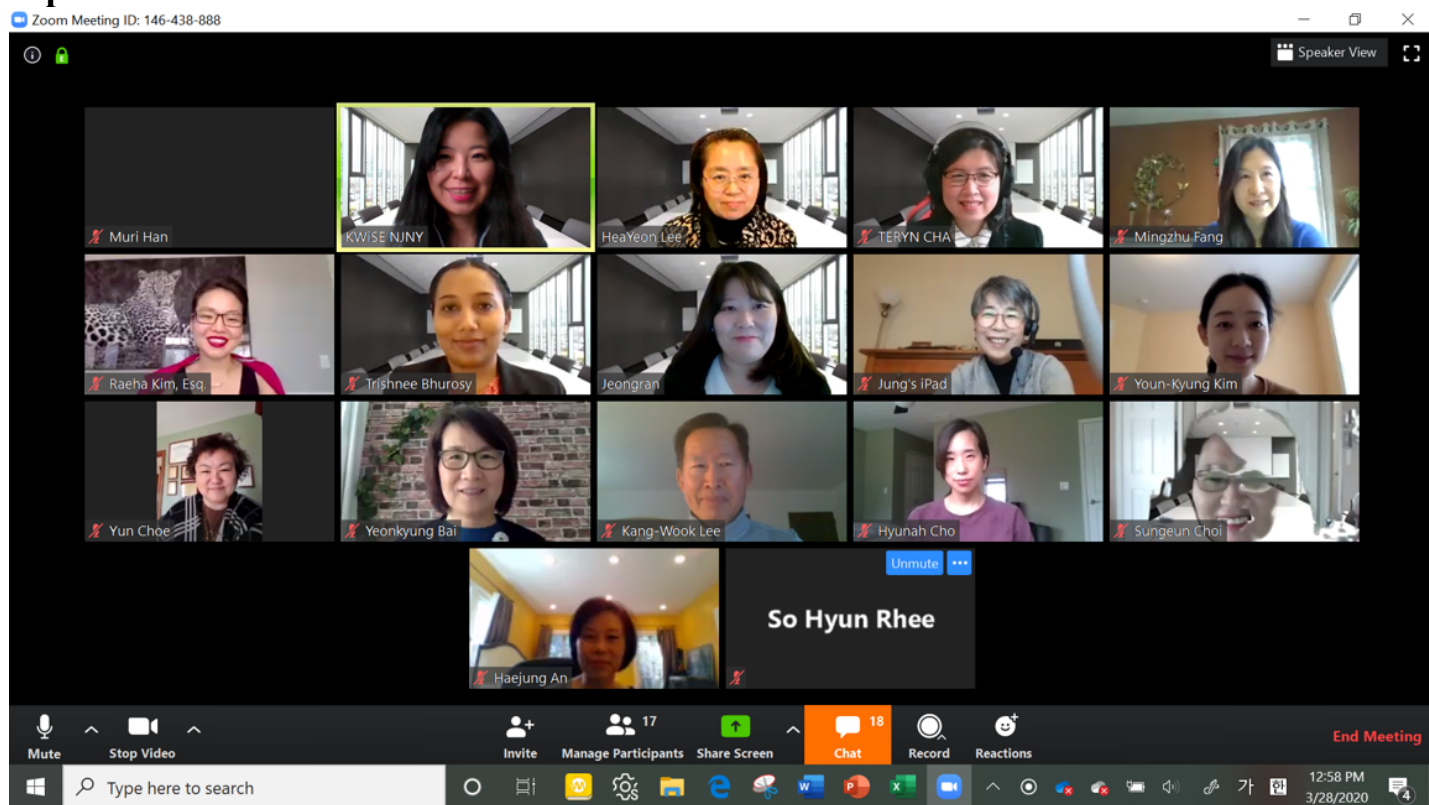
After the three presentations and discussions, all of members took a group photo through screen capture as in below. It was great success and a smooth event, during this the unique situation around the world suffering a pandemic, the first KWiSE “virtual event” ever.

Speakers:



(The third speaker Dr. Muri Han had camera issue so only slide shot)

All Attendee Group Photo:



(Some are missing at this point since we jointly held with KSEA NRC meeting, so some were on-off in parallel sessions.)

Conference Report

The 14th KWiSE West Coast Annual Conference



Korean-American Women in Science and Engineering

The 14th KWiSE West Coast Annual Conference

**WHEN SCIENCE BECOMES
A PART OF YOUR LIFE**

August 8, 2020, 10am-12pm, Zoom (Meeting ID: 964 4109 7945)

Summary

The 14th KWiSE West Coast Annual Conference entitled, “When Science Becomes a Part of Your Life” was successfully held on August 8th, 10am -12pm via a virtual Zoom platform. It was originally planned to take place in May at Qualcomm auditorium in San Diego. However, due to the unprecedented Covid-19 outbreak, the conference had been postponed and finally was held virtually considering all safety and precaution concerns. Virtual format actually worked very well. Many scientists, engineers and colleagues from all states (not only from the west coast but also from central and east coast) and even Korea and Europe could join the Conference. We had 89 conference registration/attendees. We were so excited to meet all people and see their face although it was virtual.

In this meeting, we had two distinguished women speakers. We originally had four eminent speakers but two speakers could not make it due to the pandemic related issues and time conflict. The two invited women scientists shared their inspiring stories about their career path and gave practical tips on obtaining jobs in various professional fields.

The Conference began with welcoming opening remarks from KWiSE San Diego Chapter President Dr. Mee Young Hong. Dr. Hong welcomed everyone and thanked for the participation. She also expressed her appreciation to the KWiSE – San Diego Chapter leadership board and members, and KWiSE Headquarter and all chapter presidents and members. She also addressed sincere thanks to donors and sponsors, especially KUSCO and KOFWST, for their generous support to advance important work and events including this Conference.

Followed, Dr. Gye Won Han, Founder of KWiSE, gave a brief introduction of KWiSE’s mission and KWiSE history overview. Since founded in 2004, KWiSE has been a main networking channel for Korean-American women scientist and engineers and now it is a nationally recognized non-profit organization with 7 local chapters (San Diego, Los Angeles, Washington DC, NIH, New York/New Jersey, South East and Texas). As an advantage of the virtual meeting, we could meet most of former Presidents of KWiSE.

After the overview, the first speaker (Dr. Minjeong Kim) of the Conference was introduced by Dr. Eunha Hoh. Dr. Minjeong Kim gave a talk on how to develop a professional career as a woman and minority scholar. She shared her experience and how she established her professional career as an immigrant Asian woman. With her career path demonstration, she provided some practical advices for career development. She also introduced SWS (Sociologists Women in Society) which is a nonprofit professional feminist organization. This could be a great organizational model for transforming the academy through woman leadership, career development and institutional diversity. She concluded her presentation with insightful social roles and activities as a woman and

Program		
10:00 - 10:10am	Welcome Remarks	Dr. Mee Young Hong
10:10 – 10:20am	KWiSE History Overview	Dr. Gye Won Han
10:20 – 11:00am	Seminar I Career Development as a Woman/Minority Scholar through Professional Organization	Dr. Minjeong Kim Host: Dr. Eunha Hoh
	 Minjeong Kim, PhD San Diego State University Associate Professor, Department Chair Sociology	
11:00 – 11:40am	Seminar II Science Contribution to Biotech Industry and Your Potential Career Path	Dr. Sanghee Yoo Host: Dr. Minsun Baek
	 Sang Hee Yoo, PhD ImmunoMet Therapeutics Inc. Vice President, Head of Biology Fibrosis and Oncology	
11:40 – 12:00pm	Discussion and Networking	
12:00pm	Closing Remarks	Dr. EunJeong Yoo

woman leadership in society. The other seminar presenter (Dr. Sang Hee Yoo) was introduced by Dr. Minsun Baek. Dr. Yoo's talk was focused on biotech industry and entrepreneurship as a woman's career option. She shared her experience as a scientist and now an entrepreneur in immune biotechnology industry. She explained how to commercialize your ideas and develop a start-up company. Procedures to establish a start-up in biotech were nicely illustrated in flow charts. She also showed recent drug development or biotechnology trends (Hubs model and Hotspots model). Her presentation about Covid-19 virus diagnostics and vaccines took all audiences' full attention followed by active questions and answers. She explained three strategies on Covid-19 vaccines such as RNA vaccine, adeno virus-based vaccine and neutralizing antibody. Moreover, she provided more detailed information on multiplex screening/diagnostic kits with many real examples of biotech companies including Seegen, Moderna, Cansino, Abcellera, Vir Biotechnology and Junshi Biosciences. She emphasized entrepreneurship is more than science, and in biotech industry one needs to manage both scientific and business risks. She concluded her presentation with inspirational remarks by Thomas Edison "I never failed once. It just happened to be a 2000 step process".

After the two motivational seminars, there was a brief session of discussion and virtual networking. Then participant's excitement was engaged by the raffle event. In order to facilitate participation and as a token of appreciation, raffle drawing winners were announced.

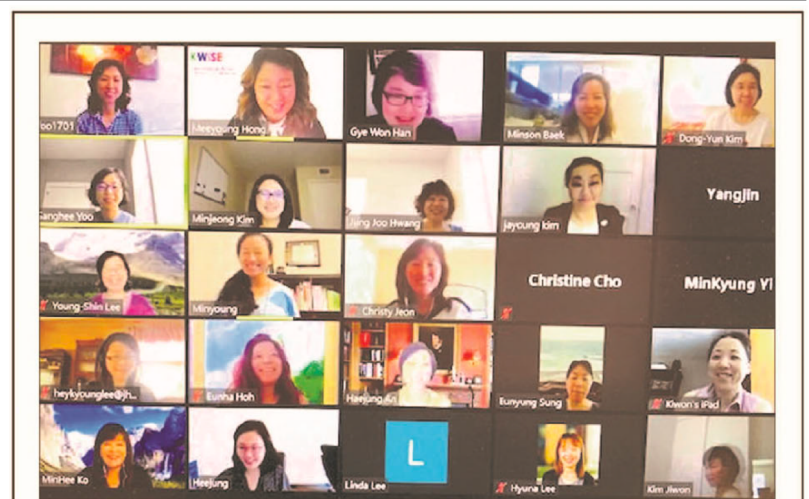
The Conference was ended with Dr. EunJeong Yoo's closing remarks with thanks for participation and wishing everyone to stay well.

Impacts & Effects of the Event

This Conference attracted established and young scientists and engineers in the San Diego, all states and Korea, and motivate them to participate in the KWiSE activities. This KWiSE meeting was not only educational but also provided networking opportunity for the future leaders to communicate and network with the established American and Korean scientists in the science and technology field. This meeting promoted scientific collaboration opportunities and close networking of Korean Women in science and engineering, and stimulated enthusiasm for participating in the scientific community. Participants also gained practical knowledge and new perspectives for their career development. This Conference restated that KWiSE is a voice for science and engineering at the national and international levels.

Sponsorships and Donations

- Dr. Jung Joo Hwang, University of California, San Diego, Calit2 i3
- Dr. Gye Won Han, Bridge Structural Biology Center, USC, KWiSE Founding President
- Ms. Michelle Cho, MassMutual Greater Los Angeles
- Dr. Sanghee Yoo, ImmunoMet Therapeutics Inc., Former KWiSE-SD Chapter President
- Dr. Gweya Kim, University of California, San Diego, Former KWiSE-SD Chapter President
- Dr. Minson Baek, Vertex, Former KWiSE-SD Chapter President
- Dr. Heekyung Chung, Former KWiSE-SD Chapter President
- Ms. Eunyung Sung, Qualcomm
- Dr. Eunha Hoh, San Diego State University, Former KWiSE-SD Chapter President



샌디에고 여성과학자협회가 줌으로 학회를 개최하고 있다. (SD 여성과학자협회 제공)

SD 한인여성과학자협 '화상 학회' 열어

샌디에고 한인여성과학자협회 (KWiSE·회장 홍미영 SDSU 교수)는 지난 8일 줌으로 90명이 참가한 가운데 김민정 교수(SDSU)와 유상희 박사(임뮤노멧 테라퓨틱스 부사장) 등 연사를 초청해 학회를 열었다.

이날 첫번째 연사로 나선 김 교수는 소수민족 여성으로서 전문직 종을 통한 자기계발이라는 주제로 이민자로서 자신의 경험을 바탕으로 전문직 경력개발을 성취해 나가는 진로와 본인이 활동하고 있는 SWS(사회에서 여성을 위한 사회학자)와 여성리더십 및 여성활동에 대해 강연했다.

또 유 박사는 바이오기술 산업과 개개인의 잠재적 경력과정에 대한 과학의 공헌이라는 주제로 신약개발 및 바이오 기술 동향 그리고 바이오 회사 창업에 관해 강연했다. 특히 전세계 초미의 관심사인 코로나19 백신개발에 대한 상세한 설명으로 참가자들의 많은 관심을 끌었다.

KWiSE는 2004년 재미 여성과학자와 엔지니어들의 교류와 협력 증진을 위한 목적으로 설립돼 현재 LA, DC, NIH, NY/NJ, SE, TX 등 미 전역에 7개 챕터를 두고 있다.

이번 학회는 샌디에고 챕터가 속한 서부지구학회로 지난 5월 웹캠 강당에서 개최할 예정이었지만 팬데믹 여파로 비대면 줌 강연으로 변경됐다.

웹사이트 KWiSE.org

Press release in the Korea Daily Newspaper (Hankook Ilbo, August, 12, 2020).



Chapter News



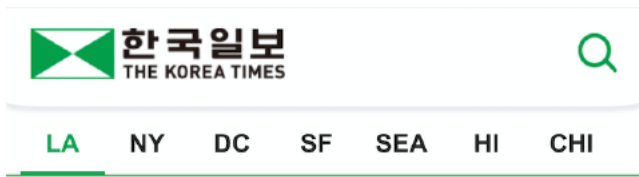
재미여성과학자협회, LA 총영사 초청 오찬

2020-09-08 (화)

가- 가+



재미여성과학자협회(회장 김자영·오른쪽 세 번째)가 지난 3일 LA 총영사 관저에서 박경재(가운데) LA 총영사 초청으로 오찬 모임을 가졌다. 이날 모임에서는 재미여성과학자협회가 기획 중인 K-12 학생들을 위한 '나이팅게일 데이' 등 여러 STEM 행사와 멘토링 워크숍 등 LA 지역 한인 학생들을 위한 프로그램 등에 대해 논의했다. 협회 웹사이트 www.kwise.org



재미여성과학자협회, 나이팅게일의 날 기념 10월24일



재미여성과학자협회(회장 김자영 박사·사진)가 중·고등 학생을 위한 '나이팅게일의 날 기념 사이언스 토크 콘서트 및 통계 경진대회'를 LA 총영사관 후원으로 오는 10월24일 개최한다고 밝혔다.

이날 오전 10시부터 정오까지 온라인으로 열리는 토크 콘서트에는 국립보건원(NIH)의 낸시 겔러 박사, 알버트 아이슈타인 의대의 미미 김 박사, 펜스테이트 대학의 니콜 라자르 박사의 강연이 진행되며, 통계 경진대회 입상자들에 대한 시상식도 함께 가질 예정이다.

통계 경진대회에 참가하고 싶은 중·고등학생은 '코로나 시대의 통계(Statistics in COVID-19 Era)'를 주제로 3분 이내의 유튜브 영상을 만들어 오는 10월10일까지 웹사이트(forms.gle/JpD6vujyPaDf5U5e9)에 사진 등록을 완료해야 한다.

KWiSE leadership visit to the Korean Embassy

KWiSE leadership visited the Korean Embassy in Washington DC on March 2, 2020 to introduce our missions and activities to Minister Seok-in Hong (Public Diplomacy) and Minister Counselor Hae Dong Seo (Agriculture & Food).



중앙일보 2020년 9월 14일 월요일

로컬 A3

한인여성과학자협회 컨퍼런스

미 전역 8개 지부 공동 진행
내달 10일 정오~오후 3시

한미여성과학자협회(KWiSE)가 내달 10일 정오~오후 3시 온라인 컨퍼런스를 진행한다.

한인 여성과학자들은 헬스케어의 미래 등 다양한 주제의 과학지식을 나눌 계획이다. 두뇌건강, 4차 산업혁명, 미국인들의 음료수, 여성과학자들의 진로 등 주제발표가 예정되었다. KWiSE 콘퍼런스는 매년 지부별로 열렸지만, 이번에는 미 전역 8개 지부가 공동 진행한다.

한편, 워싱턴지역의 김동연 NIH지부장(사진)은 "올해 1월부터 한국에 있는 대한여성과학기술인협회와 우리 지부가 매달 한 번씩 생명과학을 주제로 웹세미나를 진행하고 있다"며 "서로 연구분야를 알아가면서 공동연구를 진



행할 수 있는 초석을 마련하고자 시작했다. 반응이 좋아서 내년에는 데이터 과학으로 분야를 넓혀서 2가지 주제 세미나를 진행할 계획"이라고 말했다.

심재훈 기자

Southeastern Chapter Weekly Book Club

Southeastern chapter KWiSE members have been meeting every week (Fridays from 9:30 pm) via virtual Zoom since March of 2020 for the Weekly Book Club to weather the COVID-19 pandemic and to keep their connections. They are currently reading *The Story of Art* by E. H. Gombrich.

Reading history: *To Kill a Mockingbird* (by Harper Lee); *Guns, Germs, and Steel* (by Jared Diamond); *A Gentleman in Moscow* (by Amor Towles); *Sapiens* (by Yuval Harari); *Anna Karenina* (by Leo Tolstoy)



(A photo from a virtual Book Club meeting on September 18, 2020)



Support us! @ www.kwise.org

SUPPORT US



Donate to KWiSE

Contributions are tax deductible and help us further our mission and support our community.

[Give Now →](#)



Amazon Smile

Select KWiSE as your charity when you shop on smile.amazon.com and we'll get .5% at no cost to you!

[Get Started →](#)

Why KWiSE?

Most fields in Science, Technology, Engineering & Mathematics (STEM) have seen growth in women over the years, however, there are still problems.

- While the ratio of women in Biological Sciences and Mathematics is close to 50%, there is considerably lower proportion of women in higher level positions. This is called the “leaky pipeline” or the “glass ceiling” problem.
- In Physical Sciences, Computer/Information Technology, and Engineering, the ratio of women is only about a quarter, which indicates a severe problem of recruitment into those fields of study.
- The proportion of Asian-Americans in leadership positions in STEM related academia, government, and industry jobs is disproportionately low compared to other races. This is called the “bamboo ceiling” problem. In particular, Asian American Women show the lowest percentage in promotion in all STEM related jobs.

*KWiSE aims to help address & solve these issues.
Together, we can make a difference!*

Follow our activities at www.kwise.org



Join us on LinkedIn <https://www.linkedin.com/groups/12018464/>

Announcement

2020 KWSE-KWiSE Virtual Seminar



2020 여성과학자 (KWSE-KWiSE) Webinar

모시는글

'연결'과 '지능', 4차 산업혁명의 핵심입니다. 대한여성과학기술인회(KWSE)와 재미한인여성과학자협회(KWiSE)가 함께 학문의 열정을 나눌 수 있는 만남의 장을 준비하였습니다. 2020년 새로운 시작으로 Bio-Health 분야 여성 연구자들의 세미나가 온라인으로 진행됩니다. 어디에 계시든, 성별에 상관없이 누구나 참여하실 수 있으니, 접속하셔서 '융합'의 미래를 설계해보세요.

일시

매달 셋째주 한국 수요일(*4월만 넷째주 수요일) / 미국 셋째주 화요일
 한국시간 기준(수요일) 오전 10:30 ~ 11:30 / 미국 동부기준 (화요일) 오후 8:30 ~ 9:30

온라인 참여방법

참여를 희망하시는 분은 주관자(정진영, ijjeong@kribb.re.kr)에게 사전에 메일로 참여희망을 알려주세요. 참여자들에게 세미나 당일 Webinar 10분 전에 메일로 접속코드(6자리 숫자)를 알려드립니다.



"크롬 브라우저"에서 www.remotemeeting.com에 접속
 "회의참여"에 접속코드 입력



앱에서 "remotemeeting" 설치
 "회의참여"에 접속코드 입력

2020년 일정 (한국날짜 기준)

날짜	연사	소속	제목	분야
01/15			첫모임 (인사 및 소개) 한국: KWSE (박진아) / KRIBB (정진영) / KOSEN (윤정선) 미국: KWiSE (김종연) / NIH (전지현) / NIH fellowships (박혜영)	
02/12	이현주	KAIST	Miniature systems for ultrasound neuromodulation	Biosensors
03/18	이지현	NIAID/NIH	Multimodal imaging at Biosafety Level 4 Lab	Biomedical imaging
04/22	손명진	KRIBB	Stem cells and liver organoids	Organoid
05/13	이혜경	JHU	Cross-modal recovery of adult brain plasticity	Neuroscience
06/17	김정애	KRIBB	Epigenetic regulators in human disease	Epigenetics
07/15	지영미	NIDCR/NIH	Small leucine-rich proteoglycans as driver of inflammation in salivary gland hypofunction	Functional Genomics
08/12	김미량	KRIBB	Epigenetic study of cancer and NAFLD (Non-Alcoholic Fatty Liver Disease)	Epigenomics
09/16	김민정	NIMH/NIH	Preclinical and first-in-human evaluations of novel radioligands for imaging COX-1 and COX-2	PET brain
10/14	이수현	KAIST	Emotional Modulation in Human Memory Encoding	Cognitive neuroscience
	신현정		Forces in cellular motions	Cell mechanics
11/18	홍소균	NHLBI/NIH	Non-invasive in vivo tracking of iPSC-derived cardiomyocytes	Stem cells
12/16			마지막 모임 (Webinar 돌아보기)	

*본 일정은 사정에 의해 일부 변경될 수 있습니다.

문의

KRIBB (정진영, ijjeong@kribb.re.kr)

주관기관



2020 KWiSE Virtual Conference

KWiSE will hold its very first Nationwide Conference.

October 10, 2020 (Saturday; noon – 3 pm Eastern, 9 am – noon Pacific)

Virtual Event

Pre-registration (<https://www.eventbrite.com/e/2020-kwise-virtual-conference-tickets-119830643681>) is required to obtain login instructions.

2020 KWiSE Virtual Conference

Women Scientists in Society

October 10, 2020 (Saturday)
Noon–3pm EDT (9am–noon PDT)
Pre-registration required
<https://www.eventbrite.com/e/2020-kwise-virtual-conference-tickets-119830643681>



TIME	CONTENT	CHAIR
12:00pm EDT	Opening remarks	Dr. Jayoung Kim (KWiSE president)
12:05-12:30pm EDT	Welcome remarks Korean Embassy in DC Korean Consulate in LA Korean Consulate in Houston KOFWST President KUSCO Director	
12:30–12:50pm EDT	<u>Keynote Talk</u> Dr. Elizabeth Quinlan (Professor of Biology, Co-Director of Brain and Behavior Initiative, Co-Director of MPower Initiative on Brain Health and Human Performance, University of Maryland College Park) "Rejuvenation of plasticity in the adult cortex to reverse visual deficits"	Dr. Hey-Kyoung Lee
12:50–2:50pm EDT	<u>Short Talks</u> (10 min + 5 min Q/A) Dr. Soyoung Kim (Director of Korea Policy Center for the Fourth Industrial Revolution (KPC4IR), KAIST) KOFWST "A myth of so few women (to hire or promote) in S&T" Mr. Domin Lee (Co-founder & Director of SoDAVi Group, FX Supervisor at Dreamworks Animation Studio) Dr. Seung-Hee Yoo (Assistant Professor in Biochemistry and Molecular Biology, UTHS) "Genetic and pharmacological manipulation of circadian rhythms in pathophysiology" Dr. Jeonghee Kim (Assistant Professor in Engineering Technology & Industrial Distribution, Texas A&M University) "The future of healthcare: wearable, mobile, and non-invasive technology for health" Dr. Sohyun Park (Lead Epidemiologist, CDC) "Rethink your drink: Reducing sugar-sweetened beverage intake among Americans" Dr. Youngmi Ji (NIH) Dr. Jung Joo Hwang (Director, International Innovation Initiative, Calit2, UC San Diego) "Uncharted Paths of Women Scientists in Evolving Society"	Dr. Dong-Yun Kim
2:50-3:00pm EDT	Closing Remarks	Dr. Jayoung Kim

**SPONSOR
ACKNOWLEDGEMENT**



한국여성과학기술단체총연합회
Korea Federation of Women's Science & Technology Associations





Korean-American Scientists and Engineers Association

2020 KWiSE-ASA/CWS Florence Nightingale Day

October 24, 2020 (Saturday; 1 – 3 pm Eastern, 10am –noon Pacific)

Virtual event

Florence Nightingale Day is an outreach event that is organized annually by ASA (American Statistical Association) and CWS (Caucus of Women Statisticians) to educate middle and high school students and their teachers on the opportunities for a career in statistics and data science. Florence Nightingale was not only a famous nurse during the Crimean War, but also a pioneer woman statistician. She was the first woman to be elected member of the Royal Statistical Society in UK, and became an honorary member of the American Statistical Association (ASA). This year, 2020, marks the 200th birth year of Florence Nightingale, and KWiSE will collaborate with ASA/CWS to bring this event to the Korean-American communities at the greater Washington DC area and the Los Angeles area. Such event fits the missions of KWiSE, one of which is to educate the next generation in STEM (Science, Technology, Engineering, and Mathematics). Data science/statistics is an essential tool for any study in the STEM fields. Therefore, this event will allow the young Korean-American students to understand what data science/statistics is, and is expected to generate interest in pursuing a future career in STEM. Due to COVID-19 pandemic, this event will be run via an on-line platform.

Registration link:

bit.ly/fndayregistration2020

Tentative program

1 pm – 3 pm Eastern Daylight Time (10 am – Noon PDT)

1:00-1:05	Greetings from ASA President (Wendy Martinez, not confirmed yet)
1:05-1:10	Greetings by CWS President (Wendy Lou)
1:10-1:15	Greetings by KWiSE President (Jayoung Kim)
1:15-1:20	Greetings by Consul General of the Republic of Korea in Los Angeles, CA
1:20-1:45	Dr. Mimi Kim, Prof., Dep. of Epidemiology and Population Health, Albert Einstein College of Medicine
1:45-2:10	Dr. Nancy Geller, Director of OBR at NHLBI/NIH
2:10-2:35	Dr. Nicole Lazar, Professor, Dep. of Statistics, Penn State University
2:35-2:50	Student Presentation Award Ceremony*
2:50-3:00	Closing remarks

*Students will participate in “Data science competition” by generating a 3-minute video presentation containing: (1) research question, (2) method, (3) data summary, numerically/graphically, (4) results and conclusion.

(ref: <https://www.sigmaxi.org/meetings-events/annual-meeting-and-student-research-conference/student-research-conference/abstract-tips>)

FLORENCE NIGHTINGALE DAY 2020

Celebrating the Bicentennial of Her Birth

*Hosted by KWiSE in collaboration
with ASA & CWS*

About

Florence Nightingale Day is a celebration of women in statistics and data science. It is also an opportunity for middle school and high school students to discover career opportunities in statistics and data science and develop connections within the community.

Virtual Conference

Three distinguished speakers from academia and government will share their experiences in the field as scientists and educators. The featured speakers are:

- Dr. Nancy Geller (Director, Office of Biostatistics Research, NIH)
- Dr. Mimi Kim (Professor, Albert Einstein College of Medicine)
- Dr. Nicole Lazar (Professor, Penn State University)

The virtual event is free and open to anyone.

*The event will take place on
October 24, 2020
1PM-3PM EST (10AM-Noon PST)*

Registration Required!

Register today at [\[bit.ly/fndayregistration2020\]](https://bit.ly/fndayregistration2020)

Hosted by:

KWiSE

In Collaboration with:

Caucus for
Women in
Statistics
ASA

Sponsored by:

재외동포재단
KUSCO

FLORENCE NIGHTINGALE DAY 2020

Student Video Competition:
Responding to COVID-19

As a part of Florence Nightingale Day, KWiSE is hosting a student video competition. We hope that this will give students an opportunity to apply their creativity as well as their statistical and scientific knowledge to promote community health and wellbeing.

Students are encouraged to submit a short video discussing some topic related to COVID-19; this video should demonstrate their understanding of the related science and statistics, and appeal to an audience of their peers.

Submission Deadline:	October 15, 2020
Eligibility:	US students grades 6-12. You may submit either individually or as a part of a team (max 3 people).
Submission Format:	1 video (3 min max.), uploaded to YouTube.
Awards:	1st Place (1 entry) \$300 2nd Place (2 entries) \$200 3rd Place (3 entries) \$100 Honorable (10 entries) \$30 Mention

Competition winners will be announced on **October 24**
at the end of the Florence Nightingale Day event.

Register for FNDay and video competition at
[\[bit.ly/fndayregistration2020\]](https://bit.ly/fndayregistration2020)

For more information on the video competition, visit [\[bit.ly/fnday2020\]](https://bit.ly/fnday2020)
For questions, please send an email to FN.KWiSE@gmail.com

2020 UKC (US-Korea Conference)

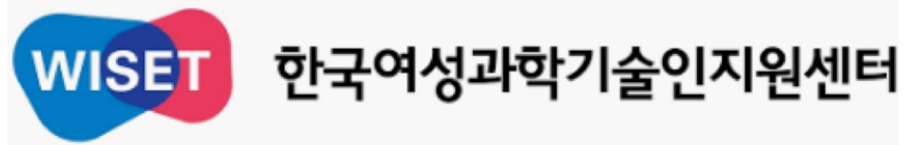
UKC 2020 Virtual
Sustainable Development & The Future
US-Korea Conference (UKC) 2020 - Virtual

ABOUT KSEA ABOUT UKC 2020

ABOUT ▾ KEYNOTE SPEAKERS ▾ PROGRAM ▾ CALL FOR PAPERS AND YG/PF ▾ REGISTRATION ▾ SPONSORS ▾

UKC 2020 - Virtual
Dec 14-17, 2020

Sponsors & Partners



2020 Fall KWiSE Newsletter (Vol. 7, Issue 3) edited by Dr. Eun Kyung Hwang (Oregon Health & Science Univ.) & Dr. Yuyoung Joo (Univ. Maryland School of Medicine)

www.kwise.org